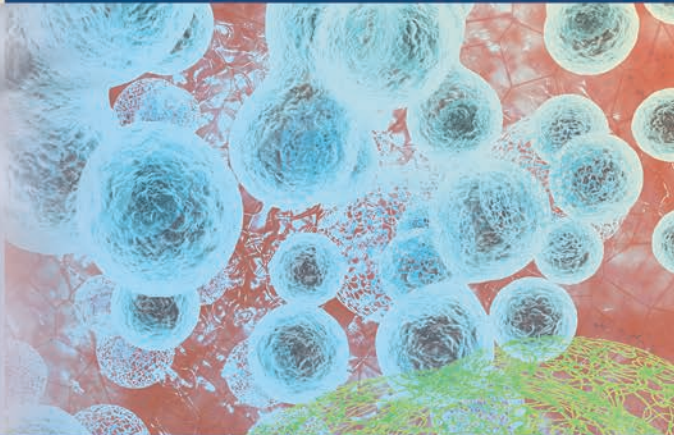
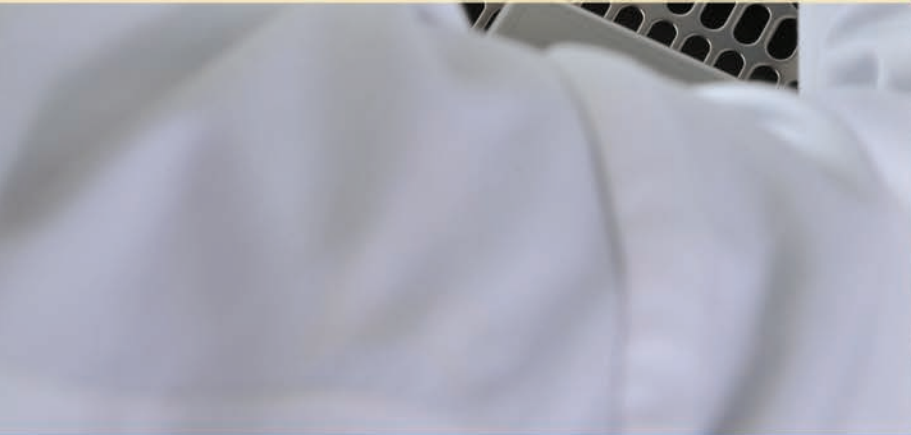




Thermo Scientific Nunclon Sphera  
Flasks, Dishes and Plates



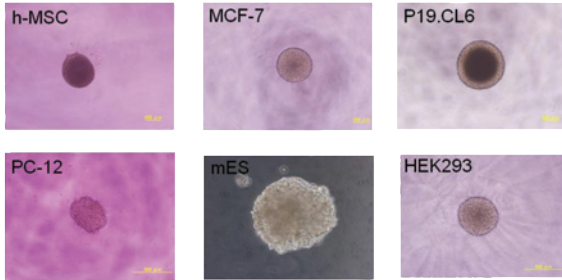
**making your  
most valuable work**  
**your best work**

# Advancing your cell culture research

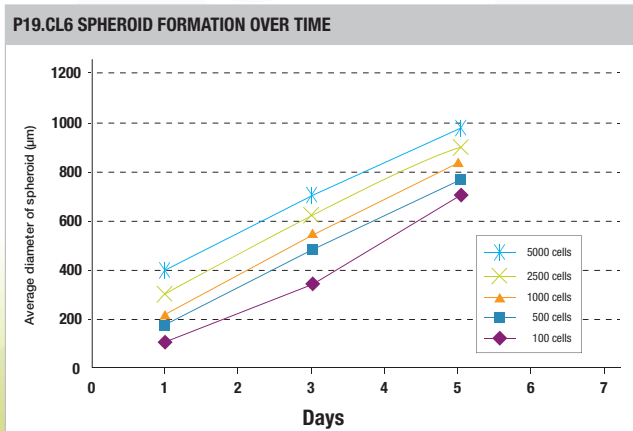
## Optimizing spheroid formation

The Thermo Scientific™ Nunclon™ Sphera culture surface allows cells to grow in suspension with virtually no cell attachment. The new surface supports many different cell types and their ability to generate spheroids; studies show that over time the spheroids grow in volume, indicating that the new surface enables consistent, repeatable cell growth.

### ENHANCING SPHEROID CULTURES ACROSS MANY CELL TYPES



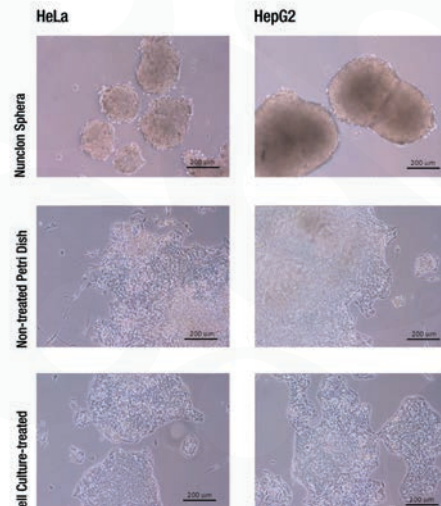
### EXPANDING SIZE OF SPHEROIDS WITH DIFFERENT SEEDING DENSITY



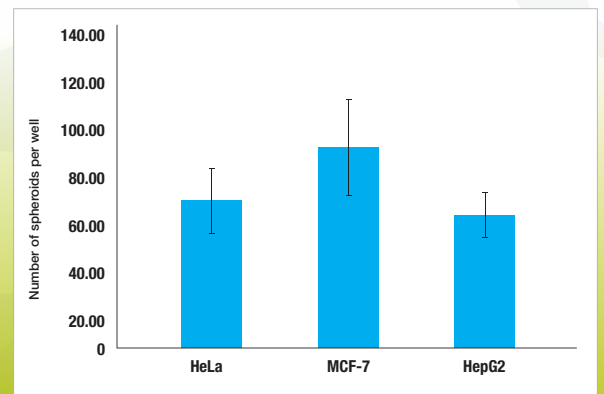
## Growing 3D cancer cultures

The Nunclon Sphera surface minimizes variability and supports the consistent formation of cancer spheroids that simulate the 3D structures of tumor growth, providing a better model system for studying tumor cell progression and efficacy of anticancer agents *in vitro*.

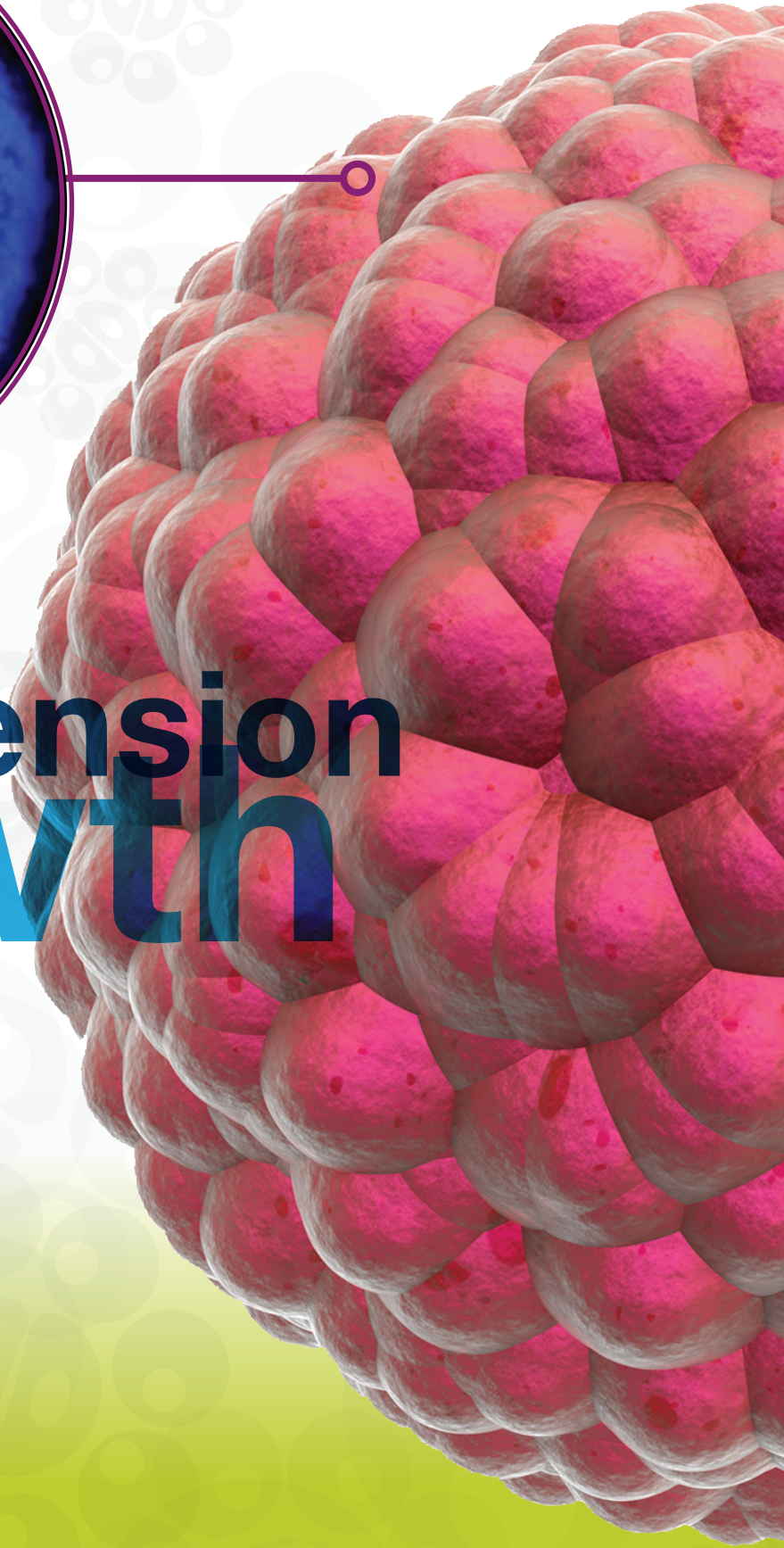
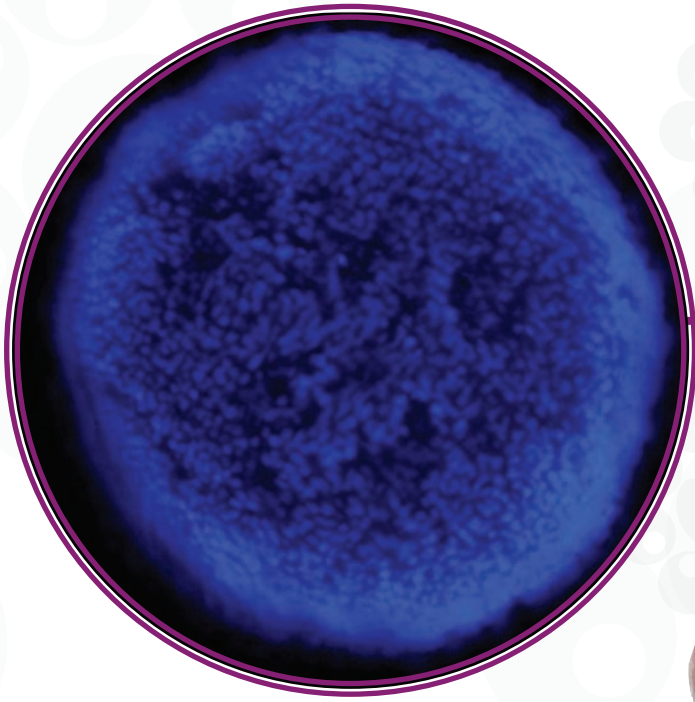
### OUTPERFORMING NON-TREATED PETRI DISH FOR CANCER SPHEROID CULTURE



### GENERATING FAVORABLE NUMBER OF CANCER SPHEROIDS







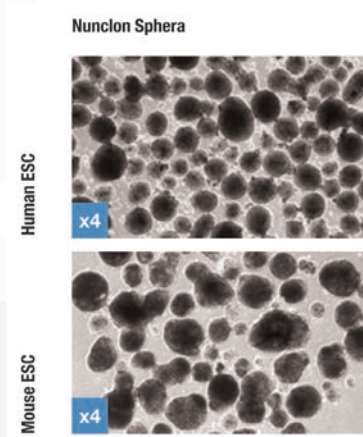
# suspension growth

# Elevating your stem cell research

## Promoting formation of embryoid bodies (EB)

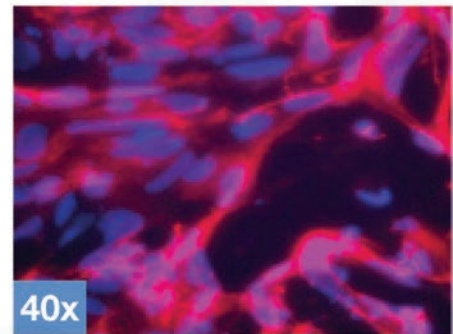
As an important milestone in the differentiation process, the Nunclon Sphera surface demonstrates superior quality for embryoid body formation of pluripotent stem cells with minimal spontaneous differentiation. The resultant cells are able to differentiate into all three germ layers.

### OPTIMIZING EB FORMATION OF PLURIPOTENT STEM CELLS

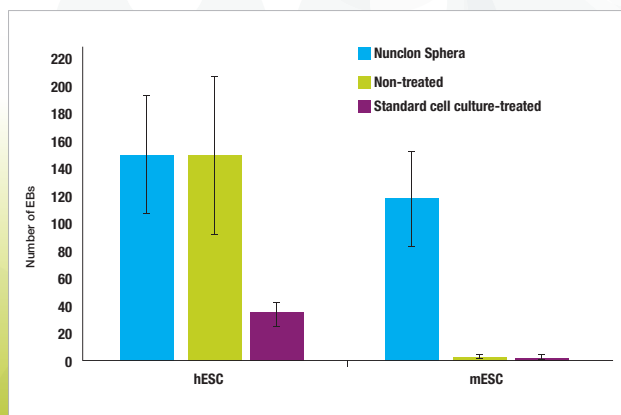


### MAINTAINING DIFFERENTIATION POTENTIAL OF PLURIPOTENT STEM CELLS

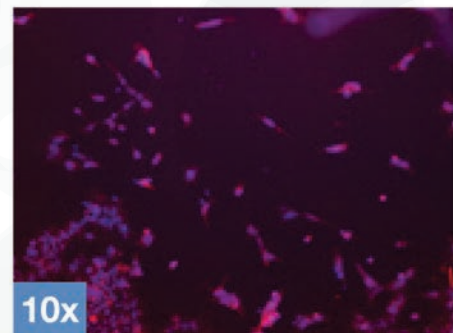
#### Beta-Tubulin



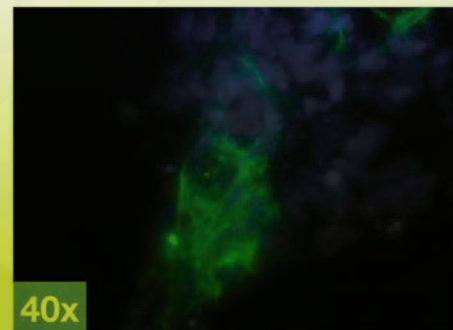
### OUTPERFORMING OTHER SURFACES FOR CONSISTENT EB FORMATION OF DIFFERENT PLURIPOTENT STEM CELLS



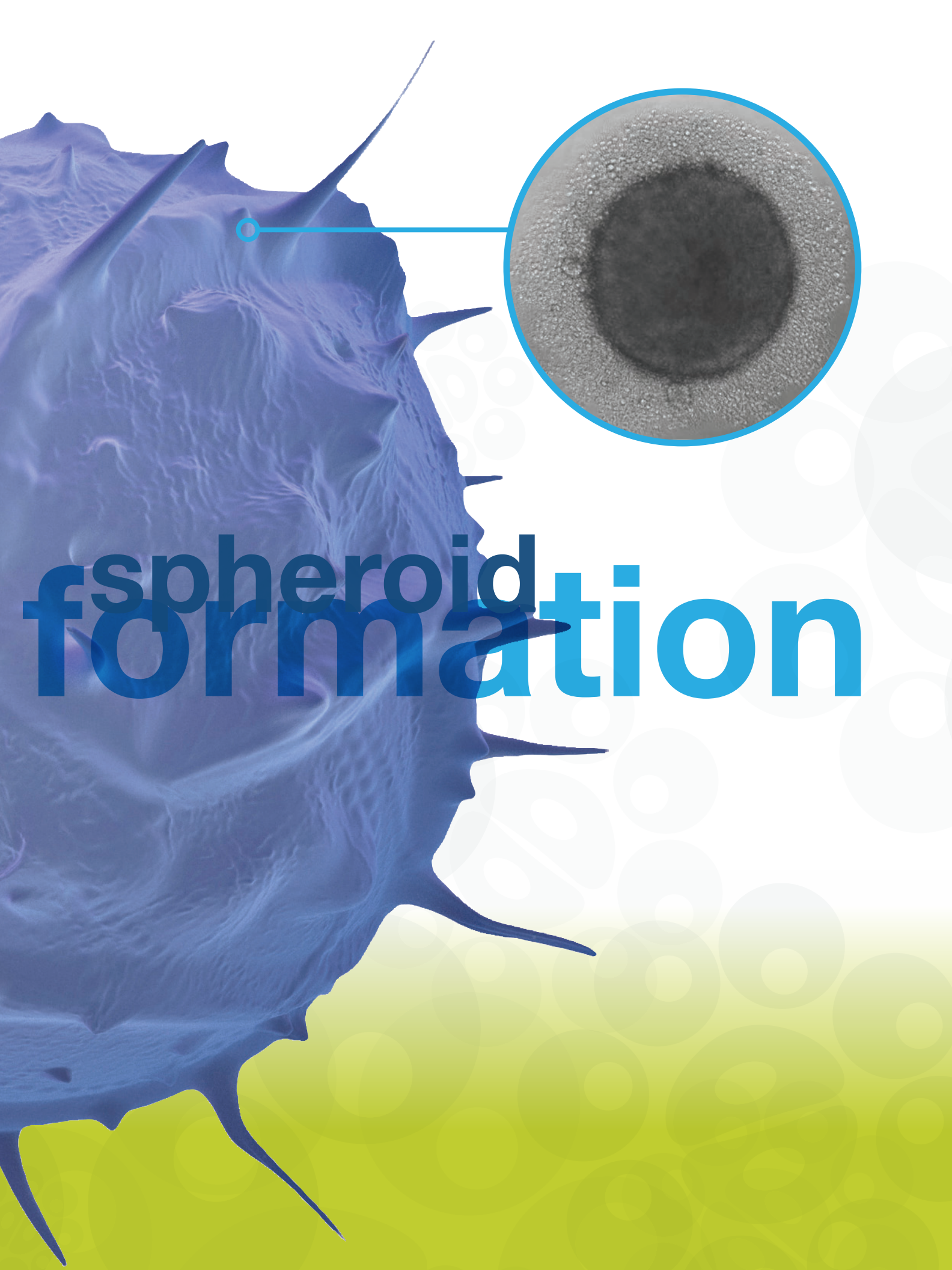
#### AFP



#### Alpha-SMA







# spheroid formation

# Ordering Information

Thermo Scientific Cat. No.	Fisher Scientific Cat. No.	Description	Units per bag	Units per case
174925	12-566-430	Microwell 96U-Well Plate, Round Bottom, Well Volume 300 $\mu$ L	1	8
174927	12-566-431	Microwell 96F-Well Plate, Flat Bottom, Well Volume 400 $\mu$ L	1	8
174929	12-566-432	Microwell 96U-Well Plate, Round Bottom Bulk Pack	5	50
174930	12-566-433	Multidish 24-Well, Culture Area 1.9 $\text{cm}^2$	1	7
174931	12-566-434	Multidish 12-Well, Culture Area 3.8 $\text{cm}^2$	1	7
174932	12-566-435	Multidish 6-Well, Culture Area 9.6 $\text{cm}^2$	1	7
174943	12-566-436	Dish 35 MM, Culture Area 8.8 $\text{cm}^2$	5	20
174944	12-566-437	Dish 60 MM, Culture Area 21.5 $\text{cm}^2$	5	20
174945	12-566-438	Dish 90 MM, Culture Area 56.7 $\text{cm}^2$	5	20
174951	12-566-439	T25 Cell Culture Flask, Culture Area 25 $\text{cm}^2$	6	18
174952	12-566-440	T75 Cell Culture Flask, Culture Area 75 $\text{cm}^2$	4	24



[www.thermoscientific.com/sphera](http://www.thermoscientific.com/sphera)

© 2013 Thermo Fisher Scientific Inc. All rights reserved. All trademarks are the property of Thermo Fisher Scientific and its subsidiaries.



#### In the United States:

For customer service, call 1-800-766-7000  
To fax an order, use 1-800-926-1166  
To order online: [www.fishersci.com](http://www.fishersci.com)

#### In Canada:

For customer service, call 1-800-234-7437  
To fax an order, use 1-800-463-2996  
To order online: [www.fishersci.ca](http://www.fishersci.ca)

**Thermo**  
SCIENTIFIC

Part of Thermo Fisher Scientific